

XTREME SERIES - FLAME RETARDANT

XR-38FR (12V38AH/135W)

Specification

Nominal Voltage	12V
Nominal Capacity(10HR)	38Ah at 1.80V/cell @25°C/77°F
Watts(15min Rated)	135 Watts/cell at 1.67V/cell @25°C/77°F
Dimension	Length 197±2mm (7.75 inches)
	Width 165±2mm (6.50 inches)
	Container Height 170±2mm (6.69inches)
	Total Height (with Terminal) 170±2mm (6.69inches)
Approx Weight	Approx 11.4 kg (25.14lbs)
Terminal	T6
Container Material	ABS
Rated Capacity	38.0 AH/3.80A (10hr, 1.80V/cell, 25°C/77°F)
	36.56 AH/4.57A (8hr, 1.80V/cell, 25°C/77°F)
	34.45 AH/6.89A (5hr, 1.75V/cell, 25°C/77°F)
	31.5AH/10.5A (3hr, 1.75V/cell, 25°C/77°F)
	27.9AH/27.9A (1hr, 1.60V/cell, 25°C/77°F)
Max. Discharge Current	550A (5s)
Internal Resistance	Approx 10.0mΩ
Operating Temp. Range	Discharge : -15~50°C (5~122°F)
	Charge : 0~40°C (32~104°F)
	Storage : -15~40°C (5~104°F)
Nominal Operating Temp. Range	25±3°C (77±5°F)
Cycle Use	Initial Charging Current less than 11.4A. Voltage 14.4V~15.0V at 25°C(77°F)Temp. Coefficient -30mV/°C
	Standby Use No limit on Initial Charging Current Voltage 13.5V~13.8V at 25°C(77°F)Temp. Coefficient -20mV/°C
Capacity affected by Temperature	40°C (104°F) 103%
	25°C (77°F) 100%
	0°C (32°F) 86%
Self Discharge	Leoch LCP series batteries may be stored for up to 9 months at 25°C(77°F) and then a freshening charge is required. For higher temperatures the time interval will be shorter.

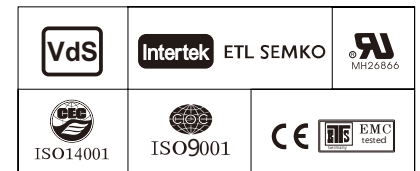


Applications

- ◆ UPS (High rate)
- ◆ Emergency power supply
- ◆ Banks & Financial Markets
- ◆ Hospitals & Testing Laboratories
- ◆ Industrial Process Control Facilities
- ◆ Date & Network Operations Centers

Compliant Standards

- ◆ IEC60896-21/22:2004
- ◆ BS 6290 Part 4



Constant Current Discharge (Amperes) at 25 °C (77°F)

F.V/Time	5min	10min	15min	20min	25min	30min	45min	1h	1.5h	2h	3h	4h	5h	8h	10h
1.85V/cell	76.8	59.2	52.4	48.3	43.9	40.0	30.0	24.3	17.6	14.1	9.91	7.84	6.52	4.45	3.72
1.80V/cell	88.2	65.3	57.5	52.1	46.6	42.2	31.1	25.0	18.2	14.5	10.2	8.08	6.71	4.57	3.80
1.75V/cell	100.3	73.3	62.4	55.2	49.2	44.0	32.3	25.8	18.7	14.8	10.5	8.28	6.89	4.67	3.87
1.70V/cell	110.4	79.5	66.6	58.8	52.0	46.2	33.4	26.5	19.1	15.2	10.7	8.49	7.04	4.75	3.94
1.67V/cell	122.1	86.5	71.2	61.5	54.2	48.2	34.5	27.3	19.5	15.5	10.9	8.62	7.16	4.83	4.00
1.60V/cell	134.3	93.4	75.2	64.7	56.8	50.1	35.5	27.9	19.9	15.7	11.1	8.80	7.28	4.93	4.08

Constant Power Discharge (Watts) at 25 °C (77°F)

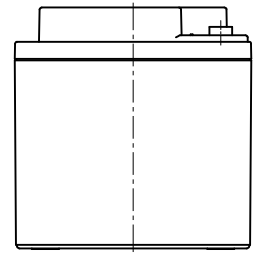
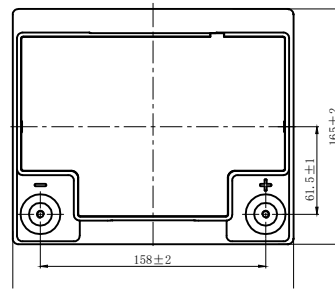
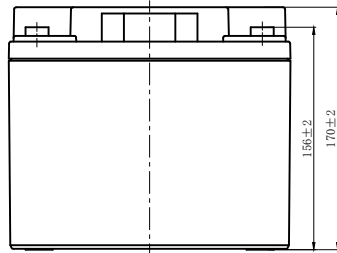
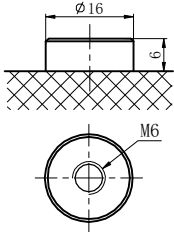
F.V/Time	5min	10min	15min	20min	25min	30min	45min	1h	1.5h	2h	3h	4h	5h	8h	10h
1.85V/cell	149.5	115.9	103.0	95.5	87.0	79.5	59.9	48.7	35.3	28.3	20.0	15.9	13.3	9.11	7.66
1.80V/cell	169.7	126.5	111.8	102.0	91.6	83.1	61.6	49.8	36.2	29.0	20.5	16.3	13.6	9.32	7.78
1.75V/cell	191.1	140.6	120.6	107.2	95.8	85.9	63.5	51.0	37.0	29.4	21.0	16.6	13.8	9.46	7.88
1.70V/cell	208.0	150.8	127.0	112.9	100.1	89.3	65.0	51.9	37.6	29.9	21.3	16.9	14.1	9.55	7.96
1.67V/cell	228.2	163.0	135.0	117.3	103.9	92.6	66.7	53.2	38.2	30.2	21.5	17.1	14.2	9.67	8.05
1.60V/cell	248.1	174.0	141.1	122.3	107.7	95.4	68.1	53.9	38.6	30.6	21.7	17.3	14.3	9.78	8.13



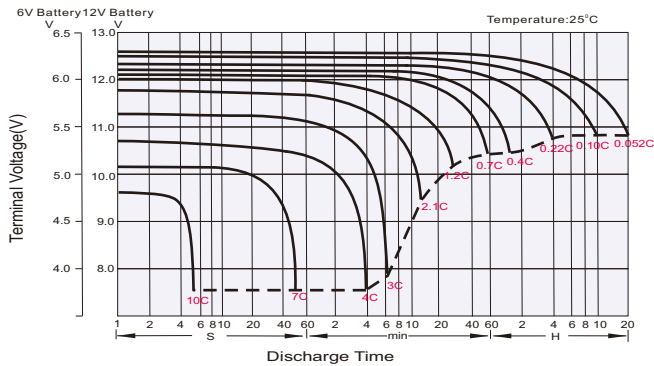
Dimensions

T6 Terminal

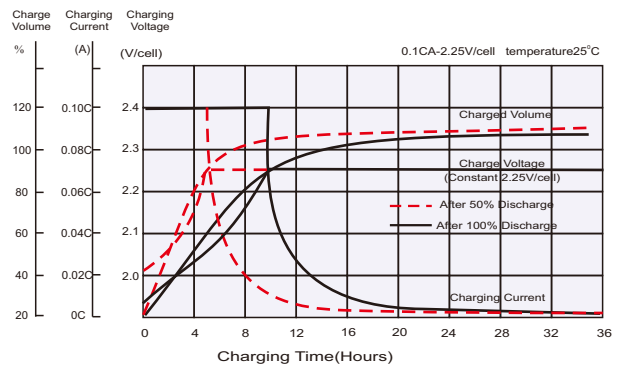
Unit: mm



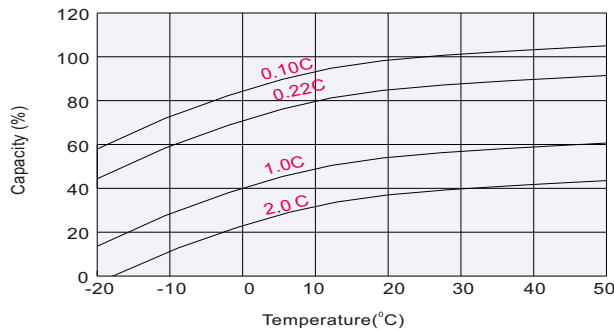
Discharge Characteristics



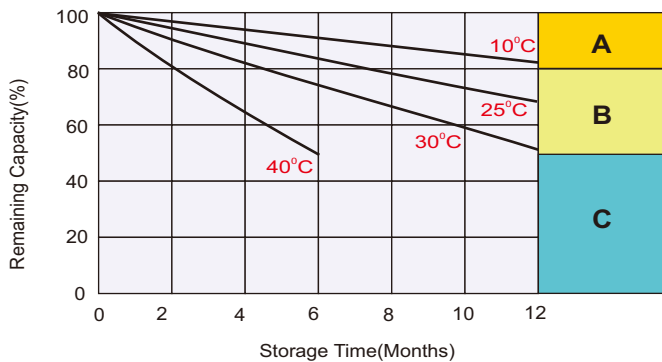
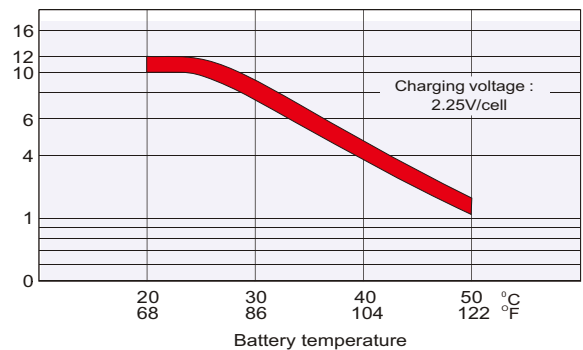
Float Charging Characteristics



Temperature Effects in Relation to Battery Capacity



Effect of Temperature on Long Term Float Life



Self Discharge Characteristics

A No supplementary charge required
(Carry out supplementary charge before use if 100% capacity is required.)

Supplementary charge required before use. Optional charging way as below:

- B** 1. Charged for above 3 days at limited current 0.25CA and constant volatge 2.25V/cell.
2. Charged for above 20hours at limited current 0.25CA and constant volatge 2.45V/cell.
3. Charged for 8~10hours at limited current 0.05CA.

C Supplementary charge may often fail to recover the capacity.
The battery should never be left standing till this is reached.

Sales Office

China sales office:

Add: 5th Floor, Xinbaohui Bldg., Nanhai Blvd.,
Nanshan, Shenzhen, China. 518052
Tel: +86-755-86036060 (100 lines)
Fax: +86-755-26067269
E-mail: export@leoch.com
Http://www.leoch.com

HongKong sales office:

Add: Workshop C, 33/F, TML Tower,
No. 3 Hoi Shing Road, Tsuen Wan,
New Territories, Hong Kong
Tel: +852 35786666
Fax: +852 21170016
E-mail: sales.hk@leoch.com

Singapore sales office:

Add: No. 1 Tech Park Crescent,
Singapore 638131
Tel: +65 6863 6078(5 lines)
Fax: +65 6863 6079
Email sales.sg@Leoch.com

North America sales office:

Add: 19751 Descartes, Unit A,
Foothill Ranch, CA 92610, USA
Tel: 949-588-5853
Fax: 949-588-5966
E-mail: sales@leoch.us
Http://www.leoch.com

Europe sales office:

Add: 9B Wheatstone Court, Waterwells
Business Park, Gloucester, GL2-2AQ,
UK United Kingdom
Tel: +44(0) 1452 729428 / 1452 729696
Fax: +44 (0)1452-690125
E-mail: Sales.Europe@leoch.com