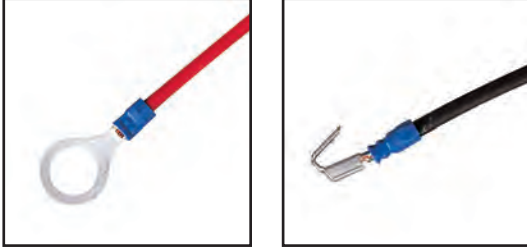


## No 2 TERMINALS (INSULATED)



Also available with twin grip copper sleeve support. When ordering add TG to Part No. i.e DVR 2-4TG.

Conductor Sizes: 1.04–2.63mm<sup>2</sup> 16–14 AWG  
Single Strand: 1.14–1.82 Dia.

### Ring

Blue Vinyl



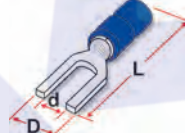
Part Number	Dimensions mm			Stud Size mm
	d	D	L	
DVR 2-3	3.2	6.6	17.3	3.0
DVR 2-3L	3.2	8.5	22.0	3.0
DVR 2-3.7	3.7	6.6	17.3	3.5
DVR 2-3.7L	3.7	6.6	22.0	3.5
DVR 2-4	4.3	6.6	19.6	4.0
DVR 2-4L	4.3	8.5	22.0	4.0
DVR 2-5	5.3	8.5	22.0	5.0
DVR 2-5L	5.3	9.5	22.0	5.0
DVR 2-6	6.4	12.0	27.1	6.0
DVR 2-8	8.4	12.0	27.1	8.0
DVR 2-10	10.5	13.6	29.7	10.0
DVR 2-12	13.0	19.0	35.2	12.0

#### Suitable crimping tools:

DHC 15, DHC 15Y, DHCR 2, DHCR 15, DBMT 1, 3 & 4.

### Fork

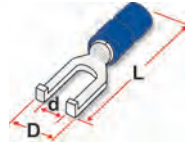
Blue Vinyl



Part Number	Dimensions mm			Stud Size mm
	d	D	L	
DVF 2-3	3.2	5.7	21.2	3.0
DVF 2-3N	3.7	6.4	21.2	3.5
DVF 2-3W	3.7	7.2	21.2	3.5
DVF 2-4N	4.3	6.4	21.2	4.0
DVF 2-4	4.3	7.2	21.2	4.0
DVF 2-4W	4.3	8.1	21.2	4.0
DVF 2-5	5.3	9.5	21.2	5.0
DVF 2-6	6.4	12.0	27.7	6.0

### Flanged Fork

Blue Vinyl



Part Number	Dimensions mm			Stud Size mm
	d	D	L	
DVF 2-3F	3.7	7.6	23.7	3.5
DVF 2-4F	4.3	7.6	23.7	4.0
DVF 2-5F	5.3	8.5	23.7	5.0

#### Suitable crimping tools:

DHC 15, DHC 15Y, DHCR 2, DHCR 15, DBMT 1, 3 & 4.

### Blade

Blue Vinyl



Part Number	Dimensions mm		
	D	W	L
DVB 2-9	9.0	2.8	17.7
DVB 2-18	18.4	2.3	27.4

### Hooked Blade

Blue Flared Vinyl



Part Number	Dimensions mm		
	D	W	L
DVB 2-13H	13.0	3.0	27.2
DVB 2-17H	16.75	4.6	27.2

#### Suitable crimping tools:

DHC 15, DHC 15Y, DHCR 2, DHCR 15, DBMT 1, 3 & 4.

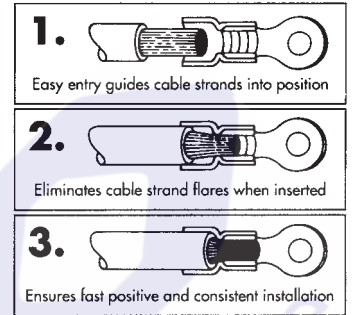
### Pin

Blue Vinyl



Part Number	Dimensions mm		
	D	W	L
DVP 2-9	1.9	9.0	18.5
DVP 2-12	1.9	12.0	21.2

Suitable crimping tools: DHC 15, DHC 15Y, DHCR 2, DHCR 1, 3 & 4.



Davico Terminals are designed for easy entry application as indicated.