
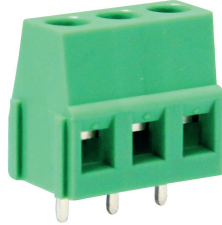


CAMBLOCK PLUS

5.08mm Pitch Standard Profile Rising Clamp Terminal Block

- 2 & 3 pole double interlocking mechanism for increased strength
- Moulded in green UL94-V0 flame retardant PA66
- Professional rising clamp terminals
- 0.3mm² - 2.5mm² (22 - 14 AWG)
- Guided pin alignment
- Captive screw
-  approved

CTBP0108



| TYPE NO. | POLES | LENGTH |
|-------------|-------|---------|
| CTBP0108/2 | 2 | 10.16mm |
| CTBP0108/3 | 3 | 15.24mm |
| CTBP0108/4 | 4 | 20.32mm |
| CTBP0108/5 | 5 | 25.4mm |
| CTBP0108/6 | 6 | 30.48mm |
| CTBP0108/7 | 7 | 35.56mm |
| CTBP0108/8 | 8 | 40.64mm |
| CTBP0108/9 | 9 | 45.72mm |
| CTBP0108/10 | 10 | 50.8mm |
| CTBP0108/11 | 11 | 55.88mm |
| CTBP0108/12 | 12 | 60.96mm |

| SPECIFICATION | |
|---------------------------|-------------------------------|
| Rating | UL=16A/300V, VDE=20A/250V |
| Insulation resistance | 500MΩ/500V |
| Withstand voltage | AC2000V/1 min |
| Contact resistance | 20MΩ (max) |
| Working temperature | -40°C to +105°C |
| Moulding | UL94-V0 flame retardant PA66 |
| Pin/terminal | Tin plated brass |
| Rising clamp | Brass, nickel plated |
| Screw/torque | M2.5 steel, zinc plated 0.4Nm |
| Recommended PCB hole size | ø1.5mm |

PCB
TERMINAL
BLOCKS

