


PCB TERMINAL BLOCKS

10mm Pitch 18 Pole Rising Clamp Terminal

- Unique 18 pole strip
- Easily cut to required number of poles
- Can be supplied pre-cut
- 1 pole in 10mm & 15mm length
- Moulded in grey UL94-V0 flame retardant PC
- Professional rising clamp terminals
- 0.2-4.0mm² (30-12AWG) solid cable
- 0.2-2.5mm² (30-12AWG) stranded cable
- Guided pin alignment
- Captive screws
- Anti solder wicking terminals
-  approved

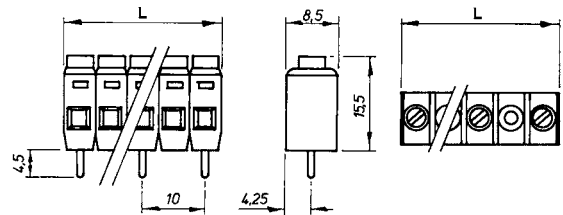
CTB8000




TYPE NO.	POLES	LENGTH
CTB8000/1	1	10mm
CTB8000/1/15	1	15mm
CTB8000/2	2	15mm
CTB8000/3	3	25mm
CTB8000/4	4	35mm
CTB8000/5	5	45mm
CTB8000/6	6	55mm
CTB8000/7	7	65mm
CTB8000/8	8	75mm
CTB8000/9	9	85mm
CTB8000/10	10	95mm
CTB8000/11	11	105mm
CTB8000/12	12	115mm
CTB8000/18	18	175mm

SPECIFICATION

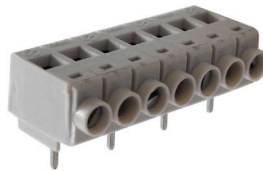
Rating	22A/500V UL=16A/300V, VDE&IMQ=22A/750V
Dielectric strength	≥3kV
Impulse withstand voltage	6kV
Working temperature	85°C
Moulding	UL94-V0 flame retardant PC
Pin/terminal	Tinned, nickel plated brass
Rising clamp	Zinc plated steel
Screw/torque	M2.5 steel zinc plated, 0.4Nm
Recommended PCB hole size	ø1.3mm



10mm Pitch 18 Pole 90° Rising Clamp Terminal

- Unique 18 pole strip
- Easily cut to required number of poles
- Can be supplied pre-cut
- 1 pole in 10mm & 15mm length
- Moulded in grey UL94-V0 flame retardant PC
- Professional rising clamp terminals
- 0.2-4.0mm² (30-12AWG) solid cable
- 0.2-2.5mm² (30-12AWG) stranded cable
- Guided pin alignment
- Captive screws
- Anti solder wicking terminals
-  approved

CTB8050



TYPE NO.	POLES	LENGTH
CTB8050/1	1	10mm
CTB8050/1/15	1	15mm
CTB8050/2	2	15mm
CTB8050/3	3	25mm
CTB8050/4	4	35mm
CTB8050/5	5	45mm
CTB8050/6	6	55mm
CTB8050/7	7	65mm
CTB8050/8	8	75mm
CTB8050/9	9	85mm
CTB8050/10	10	95mm
CTB8050/11	11	105mm
CTB8050/12	12	115mm
CTB8050/18	18	175mm

SPECIFICATION

Rating	22A/500V UL=16A/300V, VDE&IMQ=22A/750V
Dielectric strength	≥3kV
Impulse withstand voltage	6kV
Working temperature	85°C
Moulding	UL94-V0 flame retardant PC
Pin/terminal	Tinned, nickel plated brass
Rising clamp	Zinc plated steel
Screw/torque	M2.5 steel zinc plated, 0.4Nm
Recommended PCB hole size	ø1.3mm

