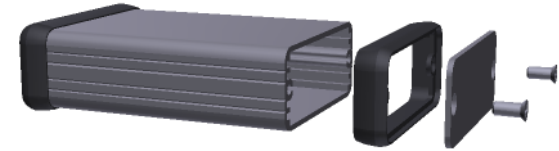
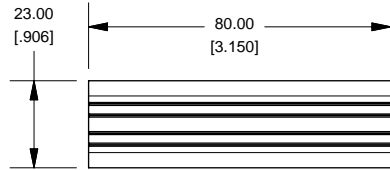
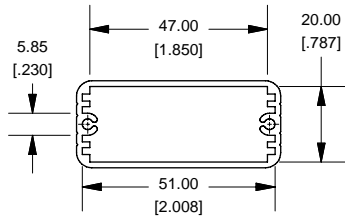
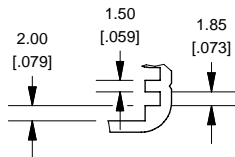
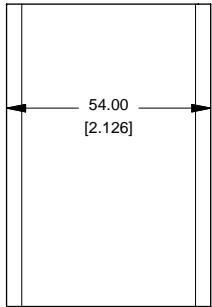


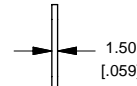
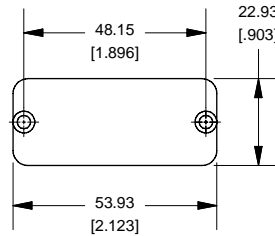
# Extrusion



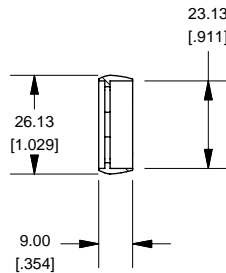
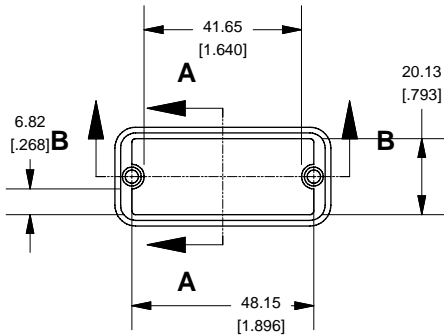
## Slot Details



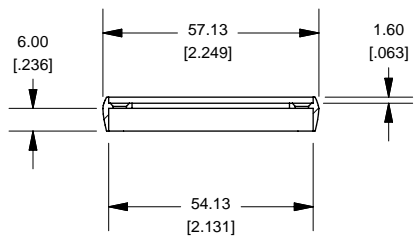
## End Plate



## Open Bezel

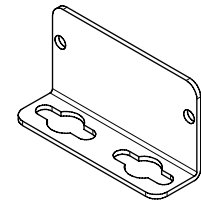


**SECTION A-A  
SCALE 1 / 2**



**SECTION B-B  
SCALE 1 / 2**

## OPTIONAL FLANGE END PANELS 1455CF



NOTE	
Purchased assembly includes box, plastic bezels, end panels, #6 Taptight screws and self adhesive rubber feet.	
Box made from Extruded Aluminum 6063.	
Bezels made with polycarbonate.	

1455C801	
PART NUMBERS	
Clear Anodized	1455C801
Black Anodized	1455C801BK
ACCESSORIES	
See website for accessories.	

**HAMMOND  
MANUFACTURING™**

**1455C801**

www.hammondmfg.com

Enclosures can be Factory Modified ( Milling, Drilling, Printing etc. )  
Solid models of this enclosure available in STEP or IGES.  
Contact Factory [mjm@hammondmfg.com](mailto:mjm@hammondmfg.com)