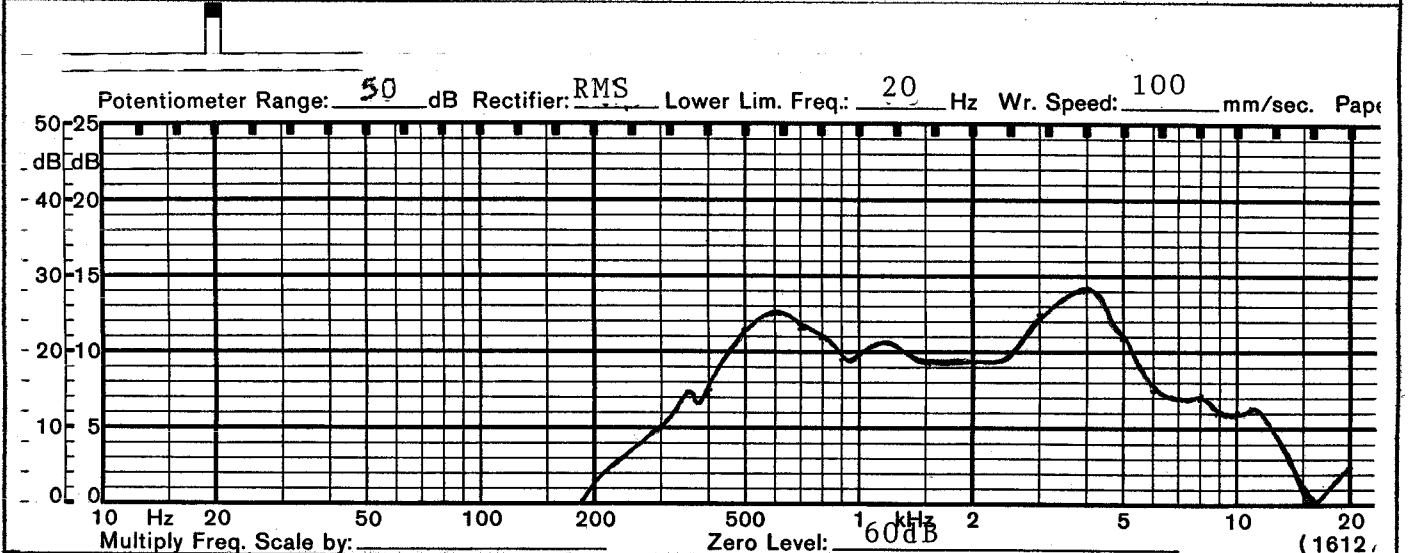
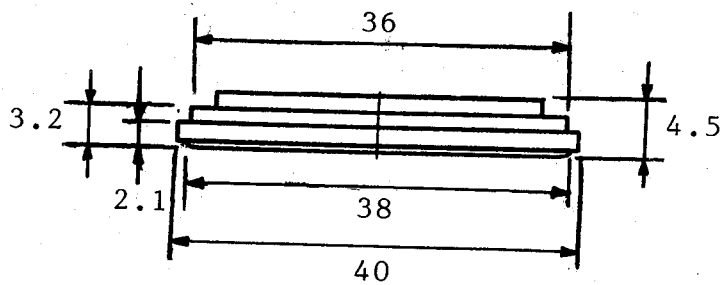
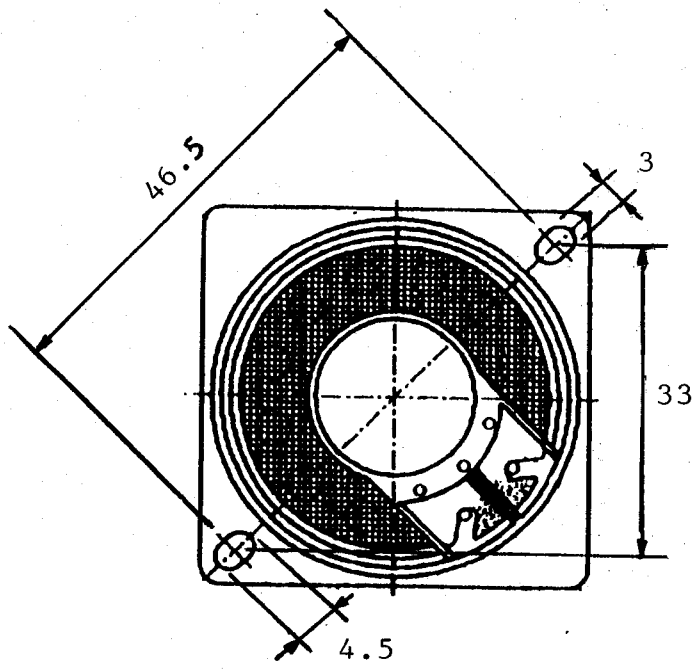


# 規 格 書 SPEAKER SPECIFICATION

客 戶 CUSTOMER'S NAME		承 認 審 核 製 作	
名 稱 MODEL	客戶機種名稱 CUSTOMER'S NO.		
	本廠機種名稱 OUR MODEL NO.                      GC0406MKX                      (ROHS)		
1	口 徑 NOMINAL SIZE	40                      mm.                      inch.	
2	公 稱 阻 抗 IMPEDANCE	8 $\Omega \pm 15\%$	at. 2K Hz. 1 V.
3	最低共振週波數 RESONANCE FO	550 Hz $\pm$ 110 Hz.	FO Hz. 1 V.
4	出力音壓 S.P. LEVEL	82 dB/w $\pm$ 3 dB	0.2 w 50 cm average at
5	出力音壓週波數特性 RESPONSE	Fo Hz~ 8K Hz                      MAX 10 dB	
6	交叉週波數 CROSSOVER FREQ.	Hz                      Hz	dB/OCT                      Net work
7	許 容 入 力 INPUT POWER	定 格 入 力 Nominal input 0.2 w.	最 大 入 力 Handling Capacity 0.4 w.
8	動 作 OPERATION	Must be normal at program source 0.2 w.	
9	聲 音 異 常 BUZZ, RATTLE, ETC.	Must be normal at Since Wave 1.3 V.	
10	磁 束 密 度 FLUX DENSITY	Gauss $\pm 10\%$	
11	總 磁 束 TOTAL FLUX	Max well min	
12	磁 鐵 MAGENET	Size 12.5 x 1.5 mm	gr                      oz
13	重 量 TOTAL WEIGHT	gr                      oz	
14	連 續 負 荷 LOAD TEST	After test meet Item 8 and 9                      White noise 0.2 W. 24 Hours	
15	失 真 率 DISTORTION	以 內 % MAX                      Hz                      W.	
16	耐 熱 性 HEAT TEST	After test meet Item 8 and 9                      65 $\pm$ 2 $\pm^\circ$ C 20-50 %R. H 24 Hours	
17	耐 濕 性 HUMIDITY TEST	After test meet Item 8 and 9                      40 $\pm$ 2 $\pm^\circ$ C 90-95 %R. H 24 Hours	





TOERANCE:  $\pm 0.3$  M/M

<p><b>APPROVED</b></p>	<p><b>CHECKED</b></p>	<p><b>DRAWING</b></p>	<p><b>CUSTOMER'S PART NO.</b></p>
			<p><b>AMAOTO'S PART NO.</b> GC0406MKX</p>