

1 2 3 4 5 6 7 8

A

B

C

D

E

F

A

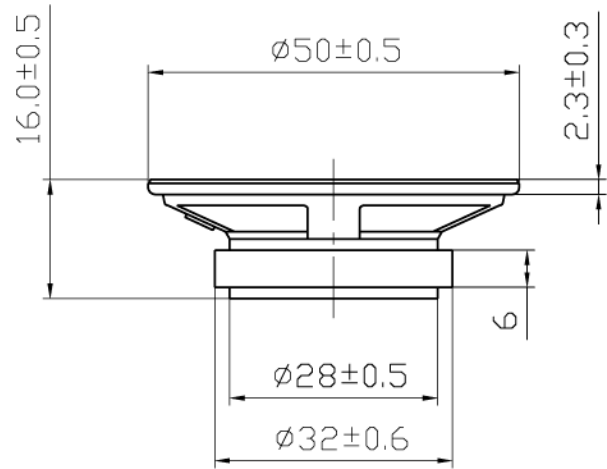
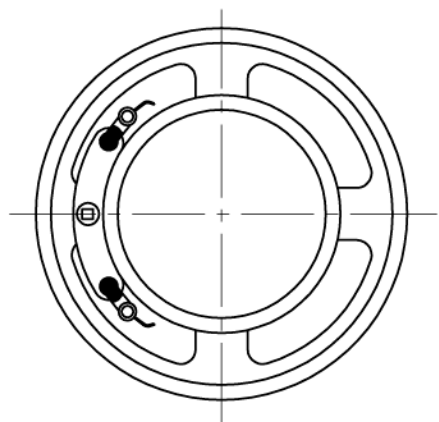
B

C

D

E

F



1	Items	Specifications	Test condition
2	Rated Impedance	8 Ω ± 15%	at 1000Hz
3	Voice coil size/material		
4	Cone edge/material		
5	Rated Noise Power	0.5W	
6	Max.Input Power	1.0W	
7	Resonant Frequency	420± 20% Hz	
8	Rated Frequency Range	f0~ 3.5 KHz	
9	Ouput Sound Pressure Level	84± 3dB	
10	Distortion	≤5%	at 1000Hz0.5W
11	Operation	Must be normal	2Vrms sine wave
12	Sweep test	Must be normal	2V sine wave
13	Load test	Must be normal	white noise with weighted filter 3.5 vrms sine wave 24 Hrs
14	Heat test	Must meet item 6 & 12 after test	50°C± 2 °C 5Hrs.
15	Humidity test	Must meet item 6 & 12 after test	40°C± 2°C 90/95%RH 16Hrs.
16	Cold test	Must meet item 6 & 12 after test	-25°C± 2 °C 16Hrs.
17	Flux density	GAUSS	
18	Magnet	32x16x6 mm	
19	Weight	46.8g	

TOLERANCES UNLESS NOTED OTHERWISE .X ± .XX ± .XXX ± 90° FORMED +2° ANGLES -1°	DRAWN		ITEM NO.			
	DESIGN		ESP50160MF-R08/05G			
	CHECKED					
	APPROVED					
	DATE	05.08.20		VER	1.1	SCALE
CONTRACT NO.			UNIT	mm	SHEET	
FIRST ANGLE PROJECTION						
		AGENCY APPROVAL				

△			
△			
△			
△			
NO.	DATE	REVISION	REFERENCE DWG

1 2 3 4 5 6 7 8